

VENICE TILT

stylish, lightweight, tilt-adjustable sun umbrella



SHADE7
premium outdoor living

BUILT WITH STRENGTH, STYLE AND FUNCTIONALITY; THE VENICE TILT SUN UMBRELLA CAN EASILY BE TILTED TO IMPROVE SHADE COVERAGE AS THE SUN MOVES ACROSS THE SKY



The Venice Tilt outdoor umbrella boasts strength, durability and ease of use, which combined with its sleek design make it the ideal umbrella to complement residential homes. It has been constructed using strong 12mm fibreglass canopy arms that can bend and flex in windy and harsh conditions. For simplicity of use the umbrella has been specially fitted with a commercial grade automatic tilt system, which allows for 60 degree canopy tilt. The winder easily does the work for you, automatically tilting the umbrella into place and giving you flexible shade coverage to adjust for a low or high sun.



VENICE TILT ADVANTAGES

- Lightweight and extremely durable fibreglass arms
- Strong 2.2mm thick aluminium post
- 3 year residential back-to-base warranty on the frame*
- European made acrylic canvas fabric with 7yr warranty*
- Heavy duty resin and stainless steel parts
- Post can be split into two halves for easy storage/transport
- Easy to open and close with rope and pulley system
- Rust free aluminium and fibreglass frame



*1yr commercial back-to-base frame warranty



*5yr commercial fabric warranty

FEATURES

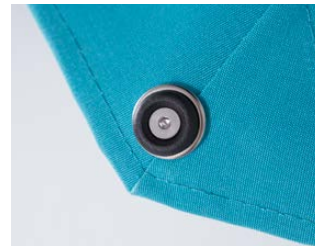
The Venice Tilt umbrella is cleverly designed and engineered to be durable, long lasting and easy to operate. Because of the fibreglass arms the umbrella is extremely durable and is able to withstand very high wind and tough conditions. The anodised aluminium post is very strong and able to be split in the middle to reduce the length for storage. The other benefit of the umbrella is that while it is one of the strongest outdoor umbrellas on the market, it is also one of the lightest umbrellas. This makes it easy to carry if it needs to be moved or stored.



STRONG 60 DEGREE
TILTING MECHANISM



EASY TO USE
WINDER SYSTEM



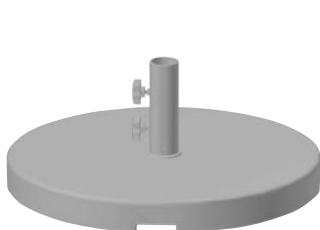
STAINLESS STEEL
CANOPY FIXINGS



STRONG AND DURABLE
COMPONENTS

INSTALLATION OPTIONS

You can either use your umbrella with a freestanding base or instead install it using our stainless steel Removable Spigot System. The base plate is bolted down to a timber deck or a concrete patio and the removable spigot is then fixed to the base plate.



30KG CONCRETE
FILLED BASE



35KG GALVANISED STEEL
PREMIUM BASE



REMOVABLE SPIGOT
SYSTEM

For installation onto a wooden deck or concrete patio.



COVER BAG

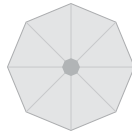
Highly recommended and easy to use. Will double the life of your umbrella fabric.



Dimensions

- ¹ Measured from point to point. All measurements are rounded and are subject to change
- ² Only when the umbrella is used at the horizontal setting. Wind damage is not covered by the warranty.

2.7m Octagonal



Dimensions of open umbrella

| | |
|-----------------------------------|-------------------|
| a: Width of canopy (cm) | 1270 ^Ø |
| b: Height to top of umbrella (cm) | 260 |
| c: Canopy edge height (cm) | 195 |
| Canopy shade area (m2) | 5.2 |

Dimensions of closed umbrella

| | |
|---------------------------------|-----|
| d: Closed ground clearance (cm) | 110 |
|---------------------------------|-----|

Wind rating guide

| | |
|------------------------------------|-------|
| Installed wind rating ² | 40kph |
|------------------------------------|-------|

CANOPY FABRIC

EUROPEAN MADE, 100% SOLUTION-DYED, ACRYLIC CANVAS.

Our premium marine-grade fabric comes with a 7 year warranty and has the best available colour fastness rating of 7-8 out of 8*. It also has the highest possible rating of UPF 80, cutting out the maximum amount of harmful UV light for excellent sun protection.

**Colours with red colour pigmentation (red, orange, yellow etc) will have lower colour fastness than other colours and will show some fading earlier.*

CANOPY COLOURS Please contact us to check colour availability. (Fabric colours may vary slightly from printed swatches shown)

STANDARD ACRYLIC COLOURS



NON-STANDARD ACRYLIC COLOURS



STRIPE ACRYLIC COLOURS

